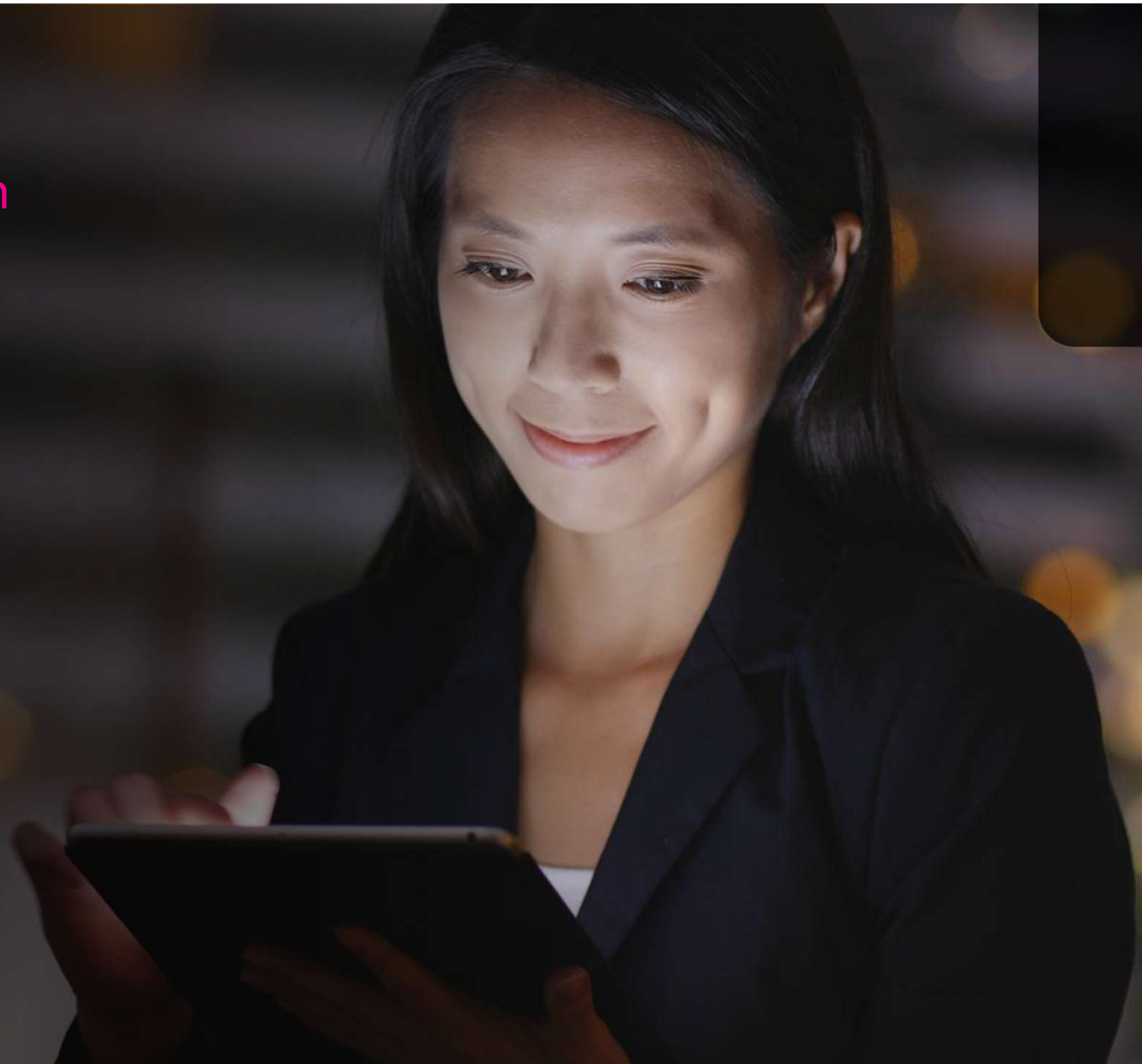


# Arcwide

## Company Presentation



think IFS  
think Arcwide



# How did we **start**? Cultural fit and comparable size...

**IFS**

**50+**

**M€1000**

**5500+**



Countries we operate in

Revenue

Employees

**Business Value**



**Excellence**

**Customer-Centric**

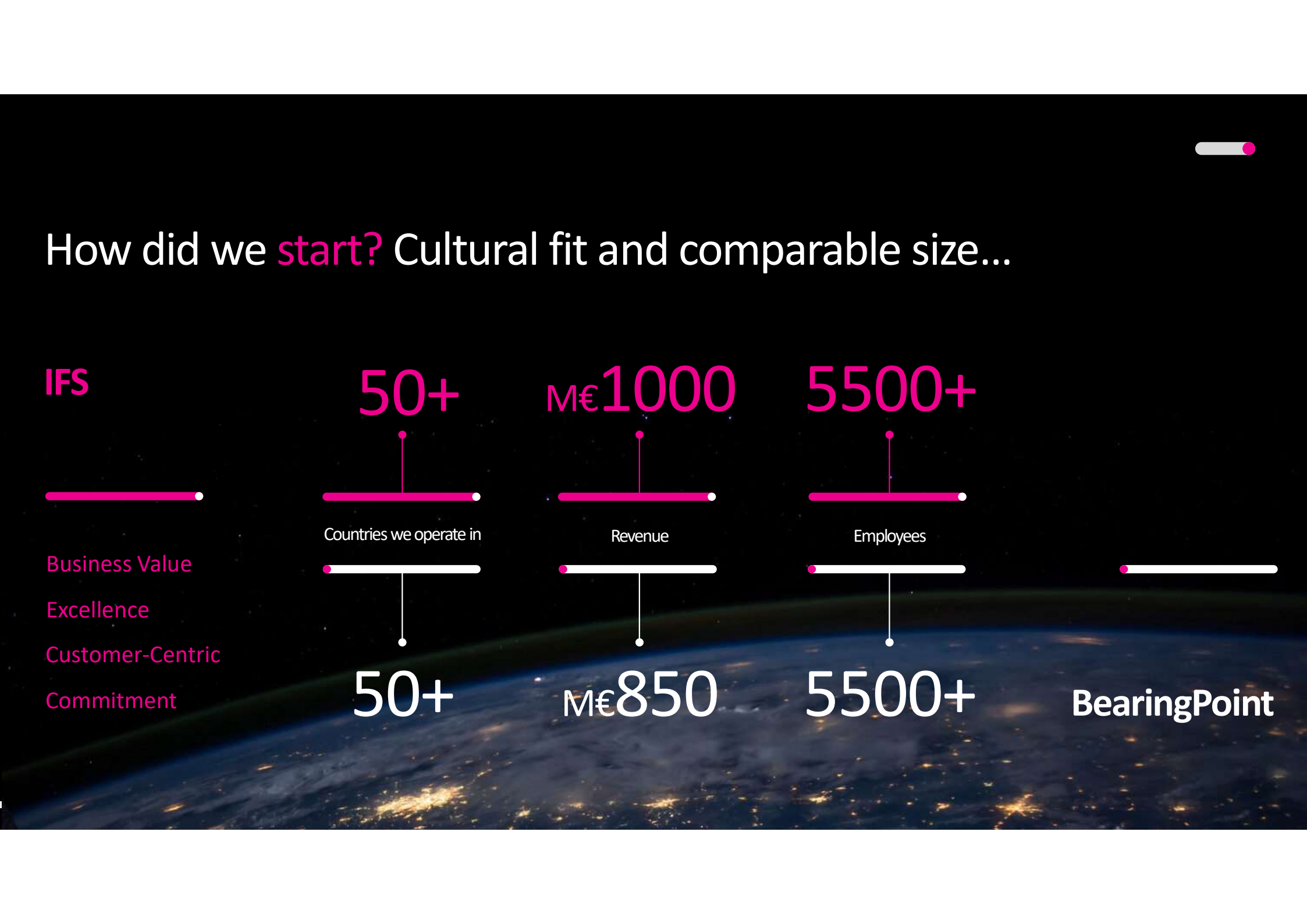
**Commitment**

**50+**

**M€850**

**5500+**

**BearingPoint**



# Arcwide provides IFS services **worldwide**

## Key Figures 2023



**63M**  
Estim. Revenue  
2023 in EUR



**25**  
Active  
Projects



**+320**  
Consultants



**22**  
Offices in  
16 Countries

## Arcwide Central Europe

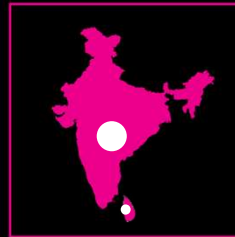


**+50**  
Consultants

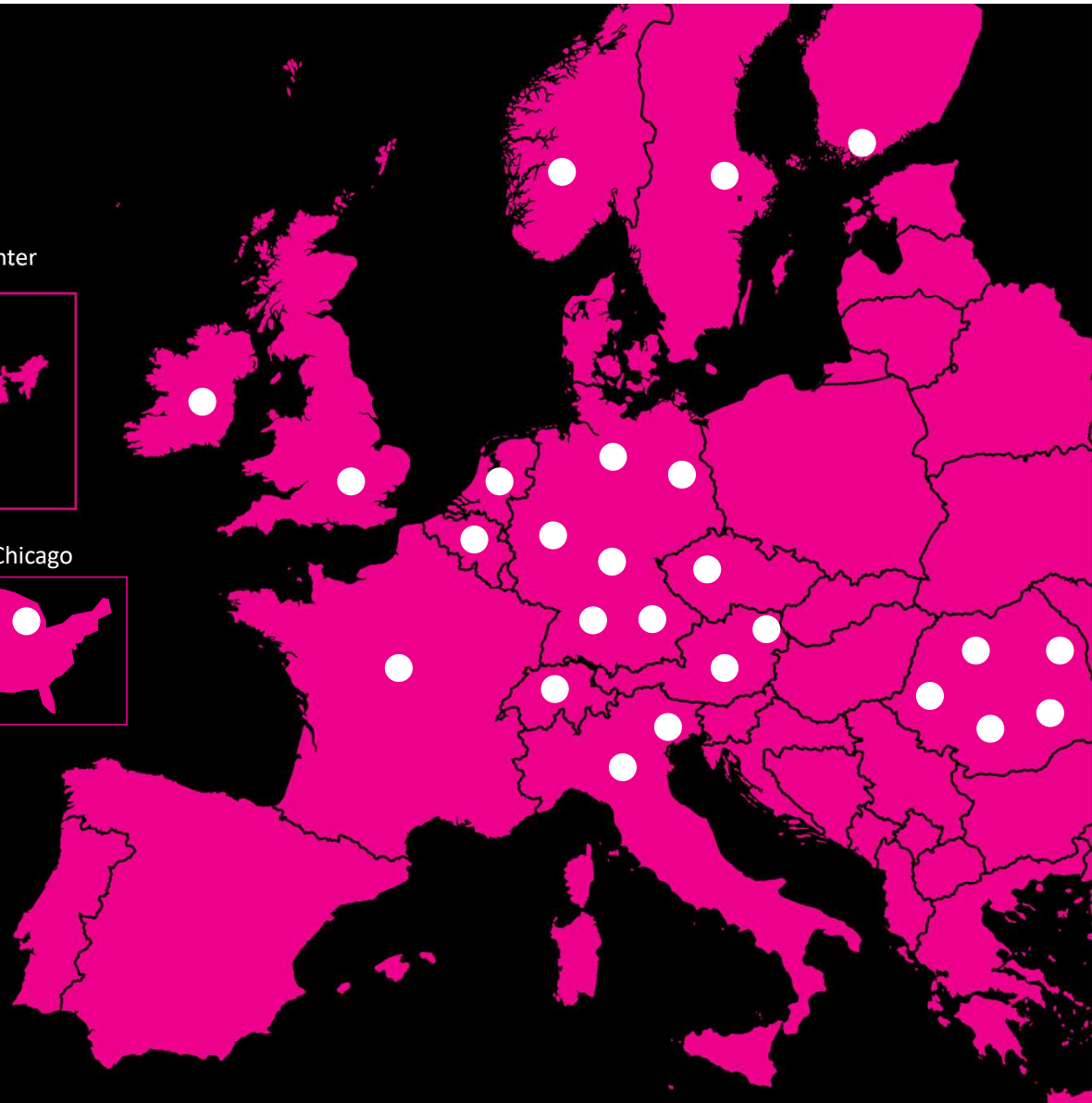
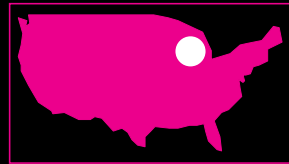


**7M**  
Planned  
Revenue in 2023

Offshore  
Delivery Center



US Office in Chicago





**our ambition** is to become the leader in the IFS services marketplace worldwide.

**solving complex challenges** and helping our clients to envision and realize their business goals.

Deliver more value. Faster



## Arcwide – BearingPoint & IFS join forces through their new Joint Venture

Deliver more value. Faster.



Uniting technology innovation and professional services to help companies accelerate value realization.

**BearingPoint®**



**IFS**

- Our portfolio combines business consulting and technology implementation capabilities
- Industry leading practices, necessary for the harmonization of processes and ensuring overall consistency (end-to-end)
- Strong methodological capabilities in change and project management

- IFS's solutions delivers service excellence and transform business productivity with a complete process mindset
- Maximization of efficiency through industry-specific design and seamless and intuitive customer experience
- Recognized by analysts as a visionary ERP provider

2014

Scoping engagements and ERP choices including IFS for our clients in the Industry markets

2018

1<sup>st</sup> large engagement with IFS: GLOBELEQ

2019

IFS  
Platinum Partner

2020

Since 2020 a rapidly increasing number global roll-out projects

IFS Partner Award "Global System Integrator of the year"

2022

Founding Arcwide

## Our vision: To be the global leader of business transformation services powered by IFS

Preferred partner for your Cloud

Our end-to-end transformation services unite technology innovation with business consultancy to help you accelerate value through value assessment, IFS systems implementation (in conjunction with business transformation and change management), and

Enterprise  
Asset  
Management

Field Service  
Management

Enterprise  
Resource  
Planning

### Partnerships and awards

- Official IFS Platinum Consulting Partner
- 2020 IFS Award winner in the category “Global System Integrator Partner of the year”
- 2022 Establishment of Arcwide as the IFS service partner
- Growth Partner of the Year 2021 & 2022



### Projects and capabilities

- IFS Managed Services, IFS Scoping & Business Value Assessment, Business Transformation & IFS Implementation
- Consulting services for end-to-end processes & requirements
- Industry-specific expertise in:



Manufacturing



Energy, Utilities &  
Chemicals



Engineering,  
Construction &  
Infrastructure



Consumer  
Goods, Life  
Sciences



Professional  
Services, Telco,  
Insurance



Defence & Public  
Services,  
Aerospace

## so, what we do is ...

Deliver More Value. Faster.

### Scoping

**We identify** the benefits of transformation for our customers

- ✓ Perform Business Process Alignment or Reengineering
- ✓ Assessment organizations
- ✓ Build Business Case, ROI, TCO
- ✓ Define transformation roadmap
- ✓ Provide project guidance and IFS expertise for ERP selection

### IFS implementation & business transformation

**We deliver** end-to-end projects with a robust methodology

- ✓ PMO with Arcwide Delivery Methodology
- ✓ Industry Expertise & Application expertise
- ✓ Dedicated Change Management
- ✓ Data migration / data factory
- ✓ IT / Technical (Cloud or not, CRIM development, etc.)

### Managed Services

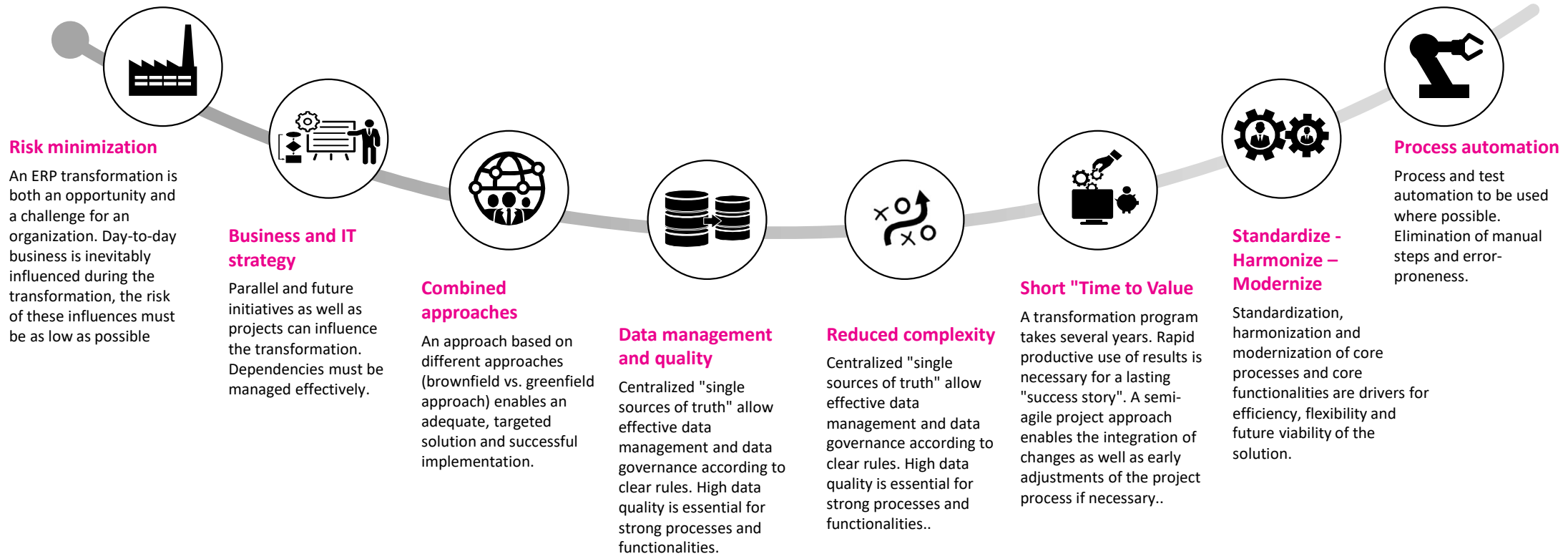
**We support** our customers on project, upgrade & “post go-live”

- ✓ Onshore capabilities
- ✓ Nearshore capabilities
- ✓ Offshore capabilities



## Arcwide's key drivers for a successful transformation to IFS Cloud

The following values support the introduction of a cloud solution



## Our Capabilities in Transformation Programs with IFS

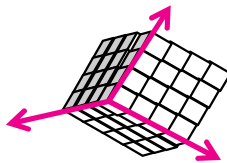
### Business Vision



Business requirements provide inputs necessary to define the « To be » situation in terms of **target scope & roadmap**



### Functional Target



Target scope is refined and studied over various axes like processes, organization, methodology and tools, to identify **what may be standardized or rationalized**



### IFS Fit Analysis

Manufacturing
Quality
Maintenance
Procurement
Logistics
Planification
Controlling & Finances

The fit gap analysis between target scope and **IFS standard functionalities** shows the necessary effort to customize ERP and improve the business processes



### IFS Implementation

#### BEST PRACTICES + TRANSVERSAL WORKS

Roll-out Strategy
IT and business integration
Technical Architecture
Change management
Project Management

The outcome of the fit analysis enables to **design, build, run and support IFS** that will cover the target processes



### Managed Services

Application Management
Hosting & Administration
IFS Migration

Once IFS is Live, the Run phase is starting with Application Management, Hosting and administration as well as IFS Migration

#### Assess organizations and processes to confirm IFS

- Scoping study
- Business Process Alignment or Reengineering

#### Design and customize IFS

- IFS fit gap analysis
- IFS implementation

#### Run IFS

- Application Management
- Hosting & Administration
- IFS migration



Arcwide